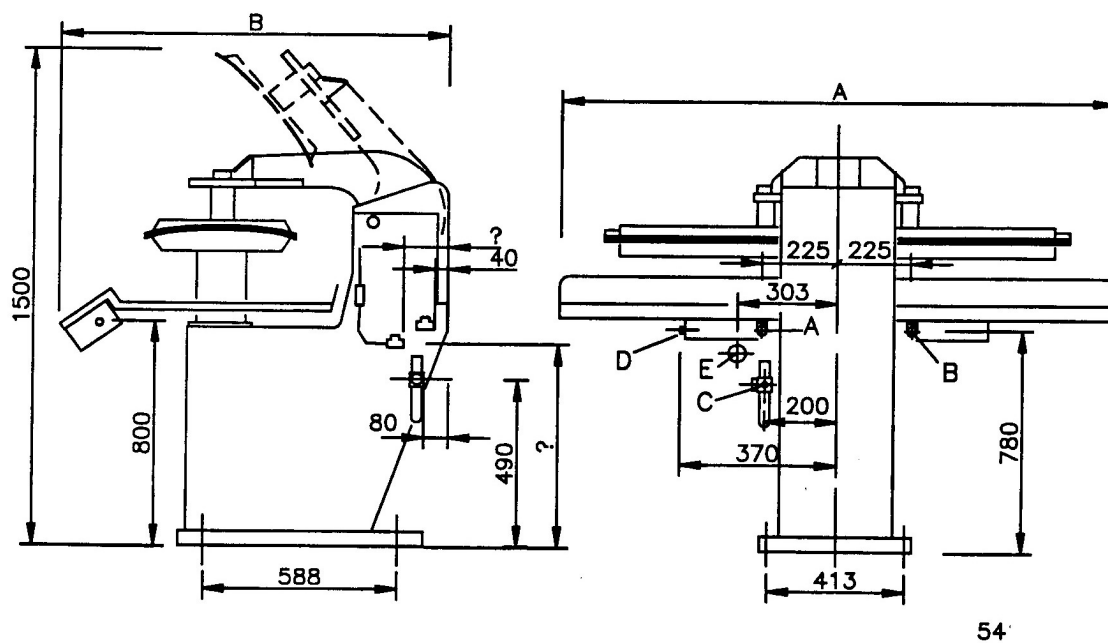
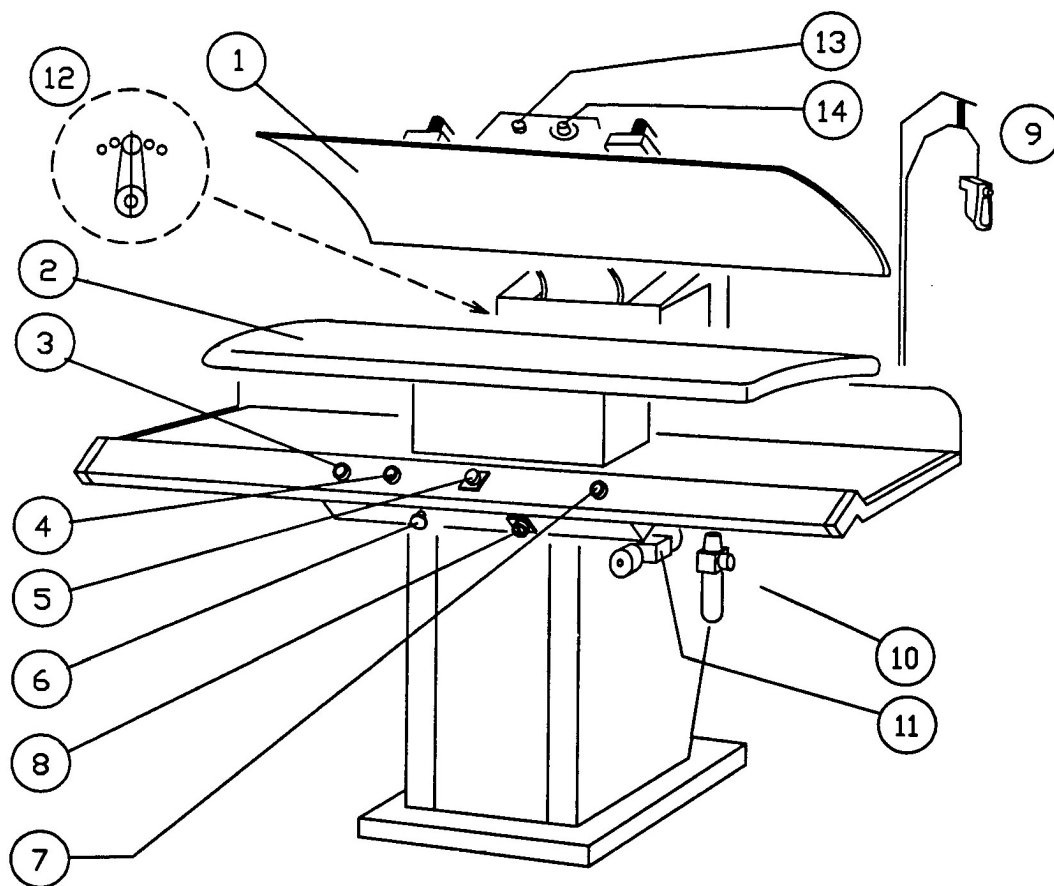


CISSELL MFG. CO.  
831 South First St. / POB 32270  
Louisville, Ky. 40232-2270  
Phone: (502) 587-1292  
Fax : (502) 585-3625  
[www.cissellmfg.com](http://www.cissellmfg.com)

Type : 119, 120, 136, 144, 153, 239, 240,  
254, 257, 723, 1193, 1210, 1401,  
1446, 1455, 1505, 1541, 1543

Serienr. : \_\_\_\_\_



# Machine survey, operating functions and connections

1. Upper pressing shoe (= Head) (form depends on the model)
  2. Lower pressing shoe (= Buck) (form depends on the model)
  3. Start button (closing of the head)
  4. Start button (start pressing)
  5. Timer pressing
  6. Emergency button
  7. Start button (closing of the head)
  8. Main switch
  9. Spray gun (optional)
  10. Air filter
  11. Oil check
  12. Depth adjustment head (not for models 119 + 120!)
  13. Lamp (just the ...-116 models)
  14. Thermostat (just the ...-116 models)
  101. Reset switch
- 
- A. Steam supply  $\frac{1}{2}$  " (just the ...-110 models)
  - B. Steam drainage  $\frac{1}{2}$  " (just the ...-110 models)
  - C. Compressed air line  $\frac{1}{4}$  "
  - D. Electrical connection
  - E. Water conduit spray gun (9) (optional)

# Symbols

---

## Warningsymbols:



Attention!  
Caution!  
Follow the instructions.



Caution, electricity!  
May cause electrical shocks.  
Do not touch!



Caution, heat!  
Do not touch!



Very important!  
Safety aspect!

---

## Used symbols:



Closing head (1) (press switch 3 and 7 simultaneously)



High pressure pressing (press switch 4 together with 3 and 7)

---



# Table of contents

## User guide

1	Introduction.....	4
	- Important	
2	Technical data.....	4
3	Installation.....	6
	☞ <b>Installation has to be carried out by a qualified engineer!</b>	
3.1	Transport and placement.....	6
3.2	Connections .....	6
3.2.1	<i>Steam</i> .....	6
3.2.2	<i>Compressed air</i> .....	7
3.2.3	<i>Electricity</i> .....	7
3.2.4	<i>Water conduit spray gun (optional)</i> .....	7
4	Put into operation .....	8
	- Tips for use	
5	Application and operation .....	9
5.1	User directions.....	9
5.2	User instructions pressing .....	10
6	Put out of operation .....	10
7	Trouble shooting.....	11
8	Maintenance and repairs .....	12
8.1	Maintenance.....	12
8.2	Disassembly / repairs.....	13
	☞ <b>Repair activities should be carried out by a qualified serviceman!</b>	
8.3	Spare parts.....	14
Addition: A. Drawings spare parts		
	B. Air line system	
	C. Wiring diagram	
	D. Models	
	E. Drawing collar clamp (just for 1401/110/116)	

# User guide

## 1 Introduction

The LAUNDRY PRESSES are designed for the pressing of all kinds of garments and be steam heated ( type ...-110) or electrically heated (type ...-116).

All numbers or capitals indicated in brackets () refer to the numbers/capitals of the drawings.

### Important:

! All installation, repair, adjusting and maintenance activities must be carried out by a qualified engineer.



! The LAUNDRY PRESS is suitable for a maximum steam pressure of 8 bar. A higher pressure will bring along safety risks and could lead to damage to the machine.



! A higher compressed air pressure than 6 bar is not allowed. A higher pressure may damage the machine or bring along safety risks.

! Read this manual before using and assembling the machine.

! Create enough working space around the machine. Place the machine as close as possible against a wall.

Advice: Keep the manual near the press.

## 2 Technical data

Type: Laundry press

Maximum allowed steam pressure	: 8 bar
Steam consumption (8 bar)	: see table 1
Maximum allowed compressed air pressure	: 6 bar
Air consumption ( 6 bar)	: see table 1 and 2
Voltage	: 120V, 60Hz (consult serial number plate)
Electrical consumption	: steam heated: 50 W electrically heated: see table 2
Weight	: see table 1 and 2
Dimensions	: see table 1 and 2
Sound level:	
A-weighted equivalent continuous sound pressure	: < 70 dB

**Table 1: Specifications steam heated laundry presses (types -110)**

Model	Dimensions A/B (mm)	Heat KJ/h	Weight Kg	Steam consumption Kg/h	Air consumption L/min.
119-110	1000/1040	11048	260	4	10
120-110	1000/1040	13810	260	5	10
136-110	1500/1120	27620	370	10	11
144-110	1500/1120	69050	460	25	11
153-110	1500/1120	44192	360	16	12
239-110	1500/1120	22096	226	8	12
240-110	1500/1320	66288	480	24	12
254-110	1500/1220	69050	480	25	12
257-110	1500/1120	27620	380	10	12
723-110	1000/1040	13810	260	5	10
1193-110	1000/1040	11048	260	4	10
1210-110	1000/1040	13810	260	5	10
1401-110	1500/1120	55240	370	20	11
1446-110	1500/1120	22096	370	8	12
1455-110	1500/1120	22096	370	8	12
1505-110	1500/1120	44192	410	16	12
1541-110	1500/1120	66288	440	24	12
1543-110	1500/1120	66288	440	24	12


**Table 2: Specifications electrically heated laundry presses (types -116)**

Model	Dimensions A/B (mm)	Heat KJ/h	Weight Kg	Electrical consumption KW	Air consumption L/min.
153-116	1500/1120	21600	360	6	12
1193-116	1000/1040	10800	260	3	10
1505-116	1500/1120	10800	410	5,5	12
1541-116	1500/1120	41400	440	11,5	12
1543-116	1500/1120	41400	440	11,5	12

### 3 Installation

 **Installation should be carried out by an expert!**

#### 3.1 Transport and placement

 **Mind your safety! Wear safety shoes and working gloves.**

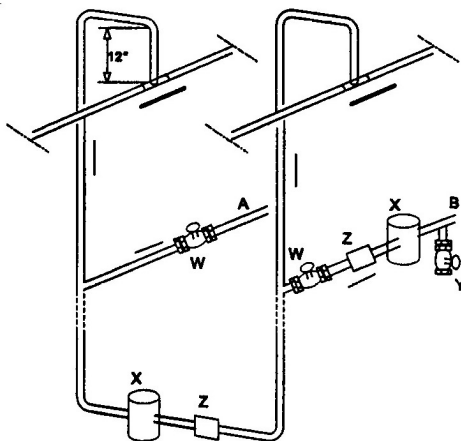
- Leave the machine on the pallet for transport.
- Avoid hard shakes.
- Use a lifting device for transport to its location and for placement.
- Handle machine by its frame.
- Fix the machine with bolts (M10, 100mm) in case of an uneven floor.
- Remove the rope that keeps the pressing shoes (1 and 2) together. **Attention:** the upper shoe will go up automatically.

#### 3.2 Connections

When making connections to the machine, take utmost care to ensure that no dirt or other materials enter the lines, since this may cause the machine to malfunction.

##### 3.2.1 *Steam* (just ...-110 types)

 **Wear working gloves!**



Connection: 1/2"

Maximum steam pressure: 8 bar

NB: If the steam pressure exceeds 8 bar, install a reducing valve in the steam supply.

- |   |   |                  |
|---|---|------------------|
| A | : | Steam supply     |
| B | : | Steam drainage   |
| W | : | Shut off valve   |
| X | : | Steam trap       |
| Y | : | Blow off cock    |
| Z | : | Non-return valve |

Figure 1: Steam connection

##### ***Instructions to connect steamlines:***

- Figure 1 illustrates the connection of the steamlines.
- Avoid condensation to enter the machine: Connect the branches of the supply and drainage lines in such way that they run at least 12" (300 mm) upwards first.
- Flush the connected steamlines with steam from the steam supply.
- Advice: 'Wet steam' can obstruct the machine. When 'wet steam' occurs, then connect a steam trap with non-return valve on the lowest point of the supply to the drainage line (dotted line figure 1). Mark the marking 'entry' and 'exit' on the steam trap and non-return valve.

- Install the steam trap and non-return valve as close as possible to the connection of the machine.
- Install a shut off valve in both supply and drainage lines in order to be able to shut off the machine from the steamlines, for instance for repair activities.
- Connect the machine to the steamlines.

### 3.2.2 Compressed air

- Connect the air filter (10) of the machine to the compressed air line (connection 1/4").
- The operating pressure has been set at 6 bar.

☞ **A higher compressed air pressure than 6 bar may damage the machine.**

### 3.2.3 Electricity



☞ **Mind your safety! Never touch cords or plugs with wet hands!**

**Instructions to connect electricity:**

- Remove the cover of the switch box under the table top.
- Connect the main power supply to the connecting block in the switch box, according to the figures 2 and 3;

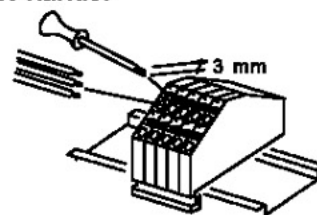


Figure 2: Connecting block

☞ **Attention! The machine is only suitable for 1 kind of voltage. The correct voltage is mentioned on the serial number plate of the machine.**

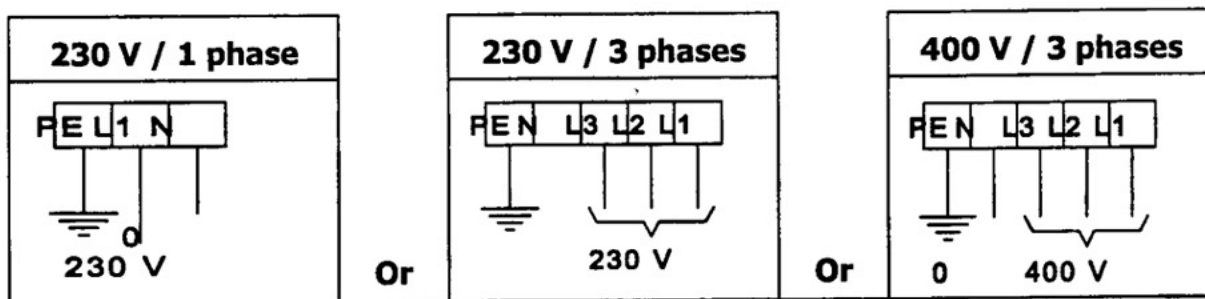


Figure 3: Electrical connection

- Put the cover back;
- Check if the main switch (8) is turned 'OFF';
- Plug in.

### 3.2.4 Water conduit spray gun (optional)

Connect the far end of the water conduit (E) to the water supply.

## 4 Put into operation



**Think of your own and other people's safety!**  
**Create a clean, surveyable and spacious working environment.**  
**Make sure that nobody stands behind the machine.**






**Check the following points daily before you start!**

- Set the desired temperature (see 'Tips for use').  
Type ....-110 (steam heated) : Maximum steam pressure 8 bar, open the shut off valves completely.  
Type ....-116 (electrically heated) : Thermostat (14).
- Open the shut off valve of the spray gun (when available).
- Turn 'ON' the main switch (8).
- Check the working of the two start button (3 and 7):
  - Put timers (5) on (for example) 15 seconds.
  - Press start button (3): upper pressing shoe (1) will stay up.
  - Press start button (7): upper pressing shoe (1) will stay up.
  - Now push the start buttons (3 + 7 + 4) simultaneously until the upper pressing shoe has closed completely.
  - After 15 seconds the upper shoe will come up again.
- Check the working of the emergency button (6):
  - Press start buttons (3 + 7 + 4) simultaneously until upper shoe has closed.
  - Press the emergency button: the head will come up IMMEDIATELY.
  - Press start buttons (3 + 7 + 4) : the head will stay up, because the emergency button is still locked.
  - Switch the machine back on by turning the emergency button to the right (clockwise).
  - The start buttons (3 + 7 + 4) should work again.
- Check the action of the safety frame around the head (only code 305):
  - Press start buttons (3 + 7 + 4) simultaneously so the press will close;
  - Touch the safety frame with your hand when head is closed;
  - The head will move back upwards into its starting position IMMEDIATELY.
  - Press the reset switch (101).
- Consult chapter 8 'Troubleshooting' in case of malfunctions.
- Let the machine heat up:
  - Type ....-110 : minimum 20 minutes.
  - Type ....-116 : wait till lamp (13) goes out.
- Ready for use.

## Tips for use:

- Press only damp garments. When available, use the spray gun (9).
- Table 3 gives some tips how to adjust the temperature for the pressing of different kinds of fabric.

Table 3: Adjustment temperature

<b>Fabric</b>	<b>Steam pressure*</b> Types ....-110	<b>Temperature</b> Types ....-116 Thermostat (14)
 synthetic fibre	maximum 1 bar	maximum 110°C
 silk / wool	1 - 5 bar	110 - 150°C
 cotton/linen	5 - 8 bar	150 - 200°C

\* If the steam pressure is hard to adjust, then vary the pressing duration (5):  
Shorter pressing time for synthetic fibres, longer for cotton and linen.

**Attention:** If you want to change to a lower temperature, wait a while because the machine needs time to cool down.

- Set the desired pressing duration with timer (5).
- With the aid of the depth adjustment head (12), if available, it is possible to intercept small changes in the thickness of the covering of the lower pressing shoe (2).

**Caution:** When the electricity or compressed air is cut off the head (1) will come up automatically.

## 5 Application and operation

### 5.1 User directions

! Use the LAUNDRY PRESS only for the pressing of garments.

! Use a steam pressure of 8 bar maximum and a compressed air pressure of 6 bar maximum. Higher pressures may damage the machine.

! All repair activities must be carried out by a qualified serviceman (see chapter 8).



**Not following the instructions of this manual may lead to injury or damage to the machine!**



**Attention!** The head (1), the underside of the buck (2) and the steam connections (A en B) are hot. Do not touch these!

## 5.2 User instructions pressing



**Think of your own and other people's safety!**  
**Create a clean, surveyable and spacious working environment.**  
**Make sure that nobody stands behind the machine.**



**Use the emergency button (6) in emergencies!**  
**The machine will be turned dead and pressureless. The press can be switched on again by turning the lower ring of the emergency button to the right (clockwise).**

**!** The garment that needs pressing should be damp. Use, if possible, the spray gun (9).

### ***User instructions:***

- Put the machine into operation according to the instructions of chapter 4.
- Set the desired pressing duration (5).
- Place the garment on the buck (2) with the outside turned up.
- Press the start button (3) and (7) simultaneously: the press will close.  
If the high pressure button (4) is operated at the same time as well, the garment will be pressed under high pressure and the head will stay closed for as long timer (5) has been set.
- The press will open automatically when the machine has finished pressing.

## 6 Put out of operation

- Turn 'OFF' the main switch (8).
- Type ....-110 : Close the shut off valves
- Type ....-116 : Put thermostat (14) on 0°C.
- Disconnect compressed air line.

**Warning!** At disconnecting the air line the filtered water will be drained out of the air control (10).



**Catch the water for it might contain oil remains.**

- Close the water conduit (E) of the spray gun (9) (optional).



## 7 Trouble shooting



### Mind your safety!

In case you cannot solve the trouble with the aid of table 4, then call for a qualified engineer.

Table 4: Troubleshooting

Disturbance	Check / solution
Upper pressing shoe (1) doesn't close	<ol style="list-style-type: none"> <li>Head (1) only closes if both starting buttons (3 + 7) are operated simultaneously.</li> <li>Is the main switch (8) turned 'ON'?</li> <li>Is the emergency button (6) unbolted?</li> <li>Is the compressed air line connected to the air filter (10) and set on 6 bar?</li> </ol> <p><b>Serviceman:</b> Check the action of the start buttons (3 + 7), electrical circuit and the compressed air circuit.</p>
Upper pressing shoe (1) doesn't stay closed.	<ol style="list-style-type: none"> <li>Head (1) should stay closed for the duration of timer (5). Check if timer has been set.</li> <li>Keep the start button (3 + 7 + 4) pushed in a bit longer.</li> </ol> <p><b>Serviceman:</b> Check the action of timer (5) and the compressed air circuit.</p>
Upper pressing shoe (1) doesn't become hot	<ul style="list-style-type: none"> <li>Types ....-110 : <ol style="list-style-type: none"> <li>Controleer of stoomafsluiters geheel geopend zijn.</li> <li>Controleer stoomdruk.</li> </ol> </li> <li>Types ....-116 : <ol style="list-style-type: none"> <li>Is main switch (8) turned 'ON'.</li> <li>Is emergency button (6) unbolted?</li> <li>Check the set temperature on the thermostat (14). Set it a bit higher. Lamp (13) should burn as a sign that the head (1) hasn't reached the right temperature yet.</li> </ol> </li> </ul> <p><b>Serviceman:</b> Check the steam and electrical circuit.</p>
Insufficient pressing quality	<ol style="list-style-type: none"> <li>Increase pressing duration, air pressure and/or temperature (see directives table 3).</li> </ol>
Garment shows smooth surfaces	<ol style="list-style-type: none"> <li>Decrease pressing duration, air pressure and/or temperature (see directives table 3).</li> </ol>

## 8 Maintenance and repairs

### 8.1 Maintenance

☞ **Mind your safety! Always turn off the main switch (8), before starting the maintenance activities.**

- **Air filter (10)**

The air filter (10) cleans and dries the air supplied from the main line.

***Maintenance:***

- Check at regular intervals whether dirt or condensate have accumulated in the clear plastic bowl.

☞ **Shut off the air supply from the air filter (10), before you start cleaning the filter.**

- The air filter drains automatically after the press has become pressureless.

☞ **Catch the water for it might contain oil remains.**

- Cleaning has to be done as follows:

- unscrew the plastic bowl;
- empty the bowl and clean it with petrol or turpentine (never use acids or detergents);
- screw the bowl on the valve.

Make sure that the sealing ring presses evenly on its seat and the bowl is properly and firmly tightened.

- **Lubrication**

- Once a month the suction pipes of the cylinders and the suspension points of the springs (see figure 4) have to be oiled.
- Once a month, the bearings, shafts and hook bolts should be lubricated with a grease gun at the indicated places. (grease: BP Energrease LS2).
- Refill the oil cylinder (11) regularly with hydraulic oil (ISO) SHF 22. Never use ordinary lubricating oil.

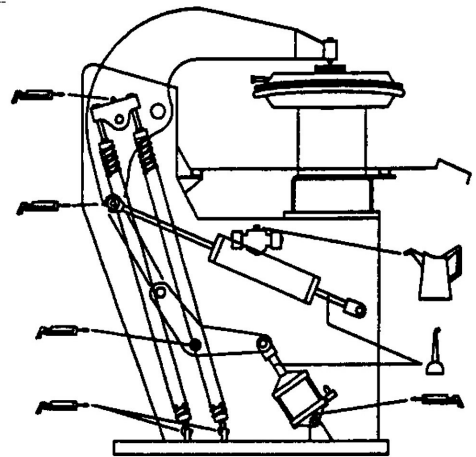


Figure 4: Points of lubrication

- **Coverings**

It is recommended to wash the coverings of the press regularly. This will prolong their life considerably.

## 8.2 Disassembly / repairs



**Before starting the disassembly, close the steam shut off valves (types ...-110) and the air filter (10) and turn 'OFF' the main switch (8).**



**All repair activities must be carried out by a qualified serviceman.**

In case some parts have become defective, spare parts can be ordered from your distributor ( see table 5 'spare parts , § 8.3).

**Use only original PANTEX parts!**

To execute repairs, the panels at the rear of the machine can be removed. When the repair activities have been completed, these have to be put back before the machine is put back into operation.

## 8.3 Spare parts

Order the spare parts from your distributor.

**Only use original PANTEX parts!**

The models 119 and 120 do not have the parts 42 till 46.

Table 5: Spare parts

Nr.	Parts	Art.nr.
2	Buck	see table 6
3	Push-button	70497
4	Push-button	70497
5	Timer	70832
6	Push-button	70444
7	Push-button	70497
8	Main switch	70775
9	Spray gun	113814
10	Air control	118551
11	Hydraulic check	115033
13	Neon lamp	70483
14	Thermal relay	70915
	Model 1193-116: Thermostat	70575
15	Solenoid valve	117693
16	Solenoid valve	117693
17		
18	Pressure switch	70749
19	Switch	70445
20	Fuse	70579
21	Switch	70560
22	Ball stud	19924
23	Steam hose (type-110)	80507
24	Yoke shaft	15124
25	Bearing	80503
26	Spring hanger	5002
27	Spring hanger shaft	see table 6
28	Hex HD screw	115023
29	Yoke pin	see table 6

Nr.	Parts	Art.nr.
30	Rubberbumper	30665
31	Hydraulic checkl. assy	116487
32	Bushing	85073
33	Check valve (type-110)	80021
34	Heim ball	85010
35	Pin	15059
36	Pin	16403
37	Needle bearing	85003
38	Center pin	15055
39	Balance spring	see table 6
40	Spring plug	5003
41	Hook bolt	15063
42	Head Adjusting screw	10810
43	Head screw spring	55046
44	Head spring screw	91653
45	Swivel button support	10812
46	Head swivel bolt support	10813
47	Covering buck	see table 6
48	Spring pad	see table 6
49	Cylinder	118637
50	Shoulder pin	95576
51	Bushing	85073
52	Pin	16403
53	Cylinder assy	see table 6
54	Muffler	25050
55	Rapid air release valve	119230
56	Pin	16403
57	Spherical bearing	85002

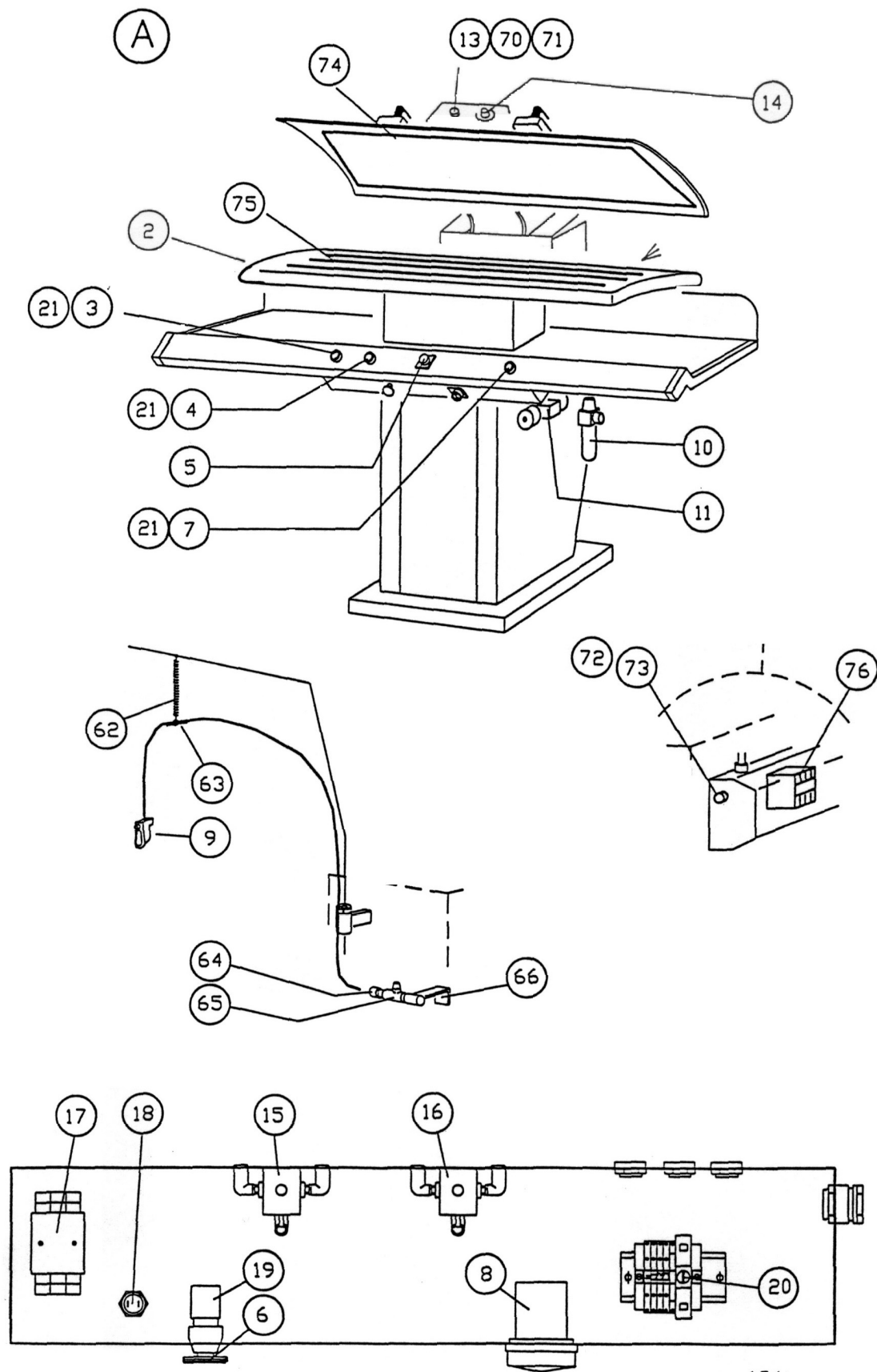


Table 6 : Spare parts

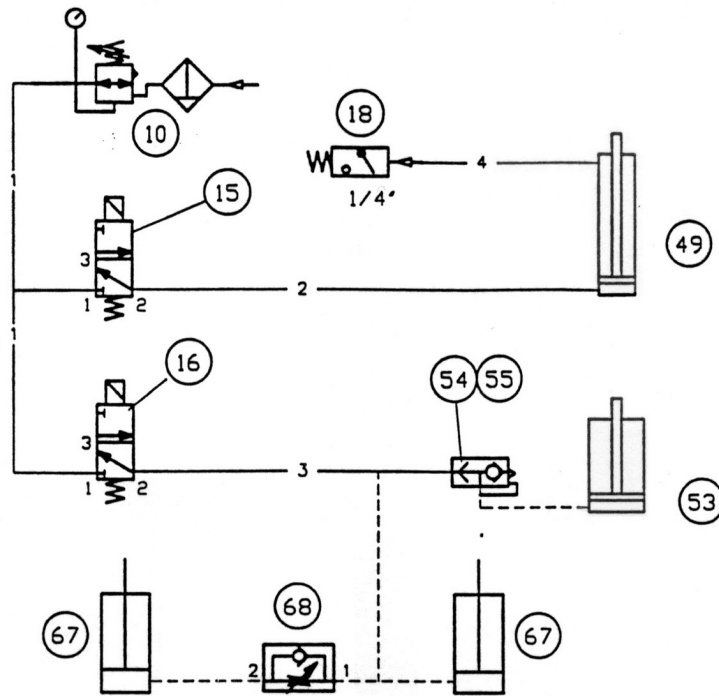
Part Model	2	27	29	39	47	48	53
119-110	102045	15052	91281	55031	116909	60332	116270
120-110	114520	15052	91281	55031	116916	60332	116270
144-110	114495	16156	16158	55001	116916	61431	116271
153-110	114486	16156	16158	55001	116917	60323	115253
153-116	102064	16156	16158	55001	116969	60323	115253
239-110	114508	16156	16158	55026	116918	60139	115253
240-110	114510	16156	16158	55001	116919	60160	115253
254-110	114507	16156	16158	55001	116920	60138	115253
257-110	114522	16156	16158	55001	116921L	60131	115253
	114523	16156	16158	55001	116922R	60132	115253
723-110	114490	15052	91281	55026	116911	60983	116270
1193-110	102046	15052	91281	55031	116912	60334	116270
1193-116	102060	15052	91281	55031	117533	60334	116270
1210-110	114481	15052	91281	55031	116913	60335	116270
1401-110	114518	16156	16158	55026	116924	60325	116271
1505-110	114488	16156	16158	55026	116928	60329	115253
1505-116	102190	16156	16158	55001	118460	60329	115253
1541-110	114285	16156	16158	55001	116929	60330	115253
1541-116	102062	16156	16158	55001	117535	60330	115253
1543-110	114479	16156	16158	55001	116930	60331	115253
1543-116	102058	16156	16158	55001	117709	60331	115253

Table 7: Spare parts

Model	Voltage	74	75
153-116	230/400 440/460/480	70797 70801	3x 70615 3x 70615
1193-116	230	70798	70613
1505-116	130/400	70798	3x 70614
1541-116	230/400 440/460/480	70799 70802	3x 70615 3x 70615
1543-116	230/400 440/460/480	- 70802	70615 1x 70615 2x 70614

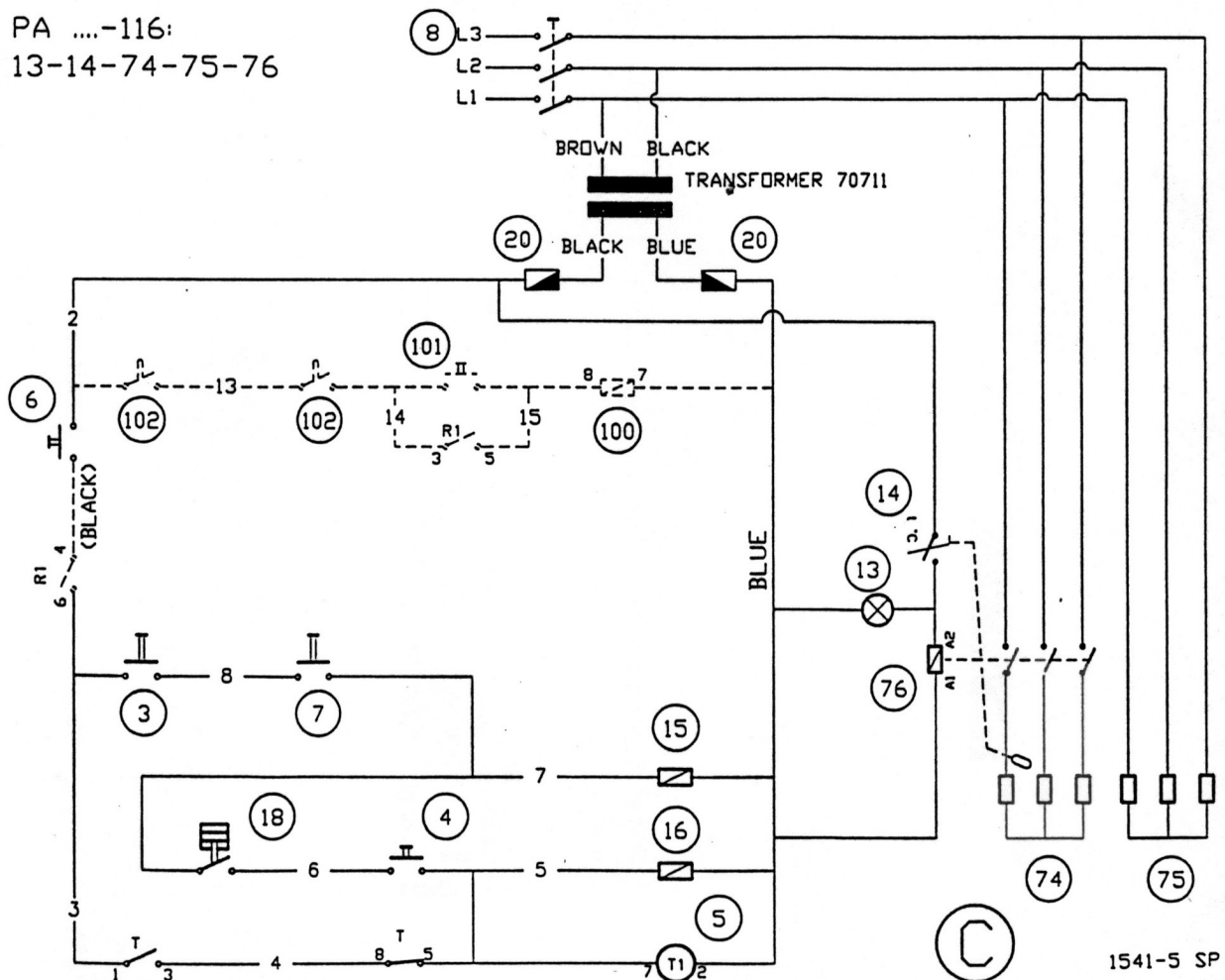


154

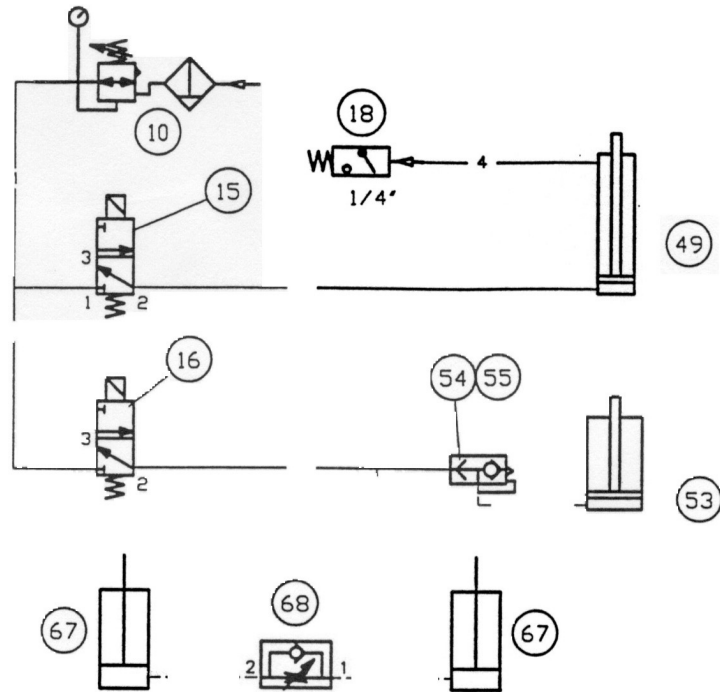


PA-1401: 67-68

PA ....-116:  
13-14-74-75-76



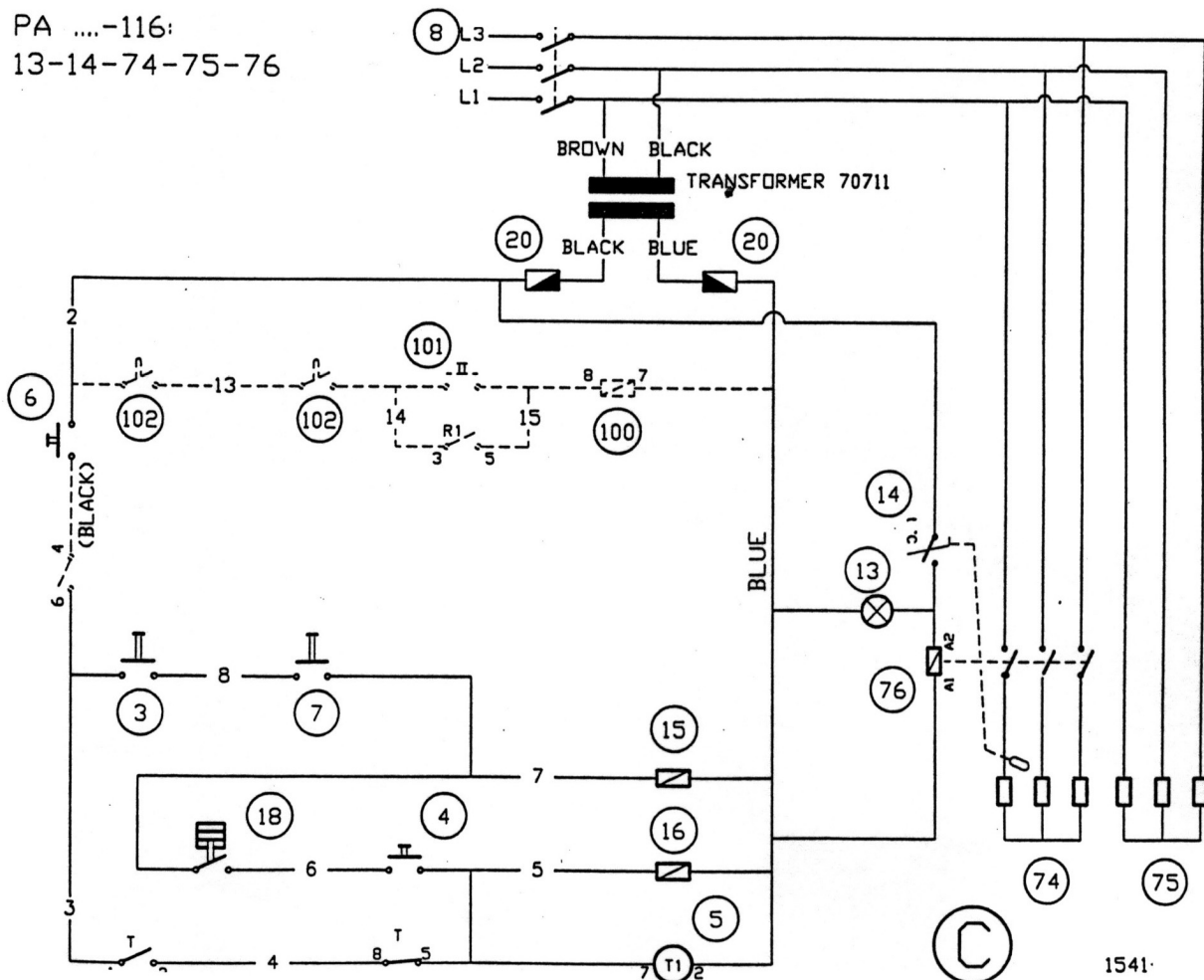


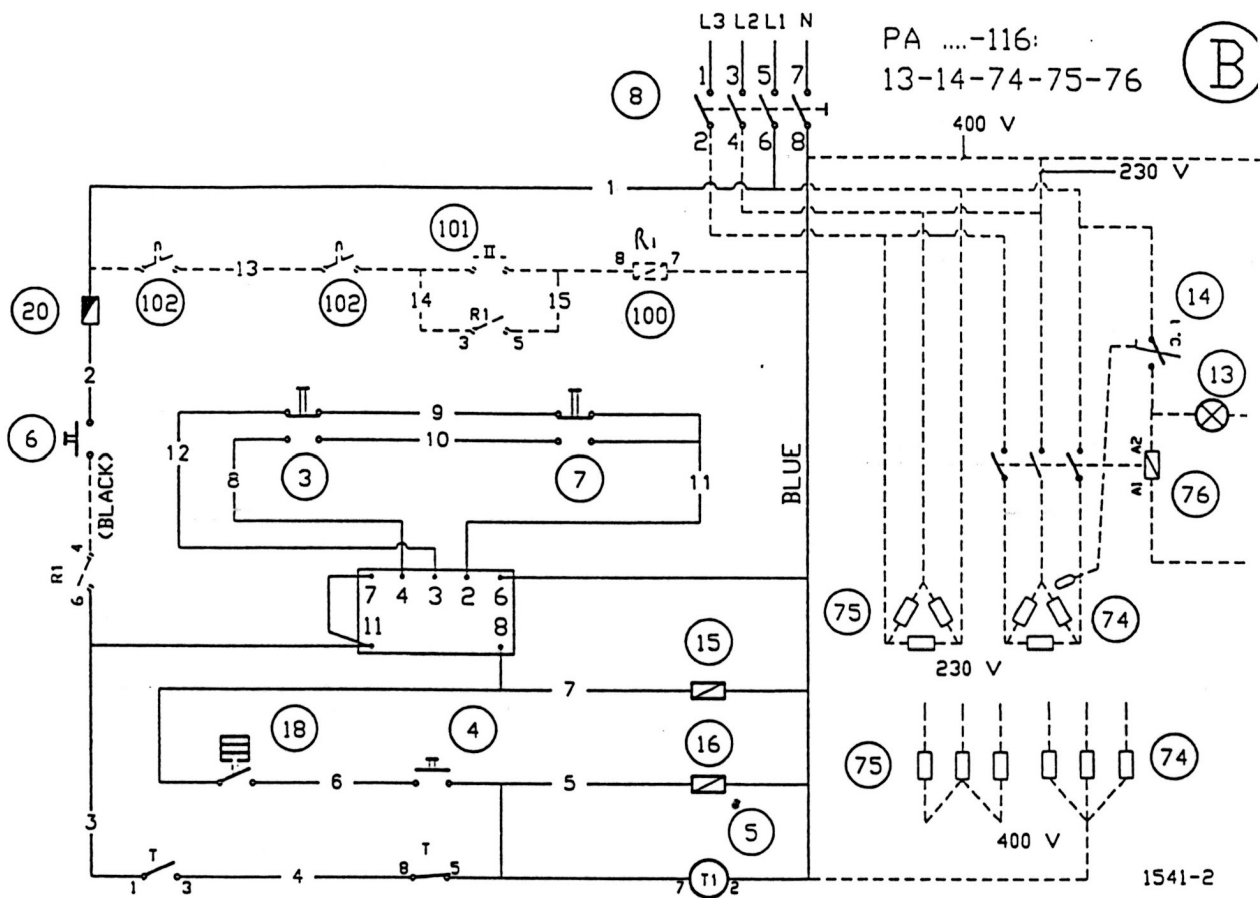


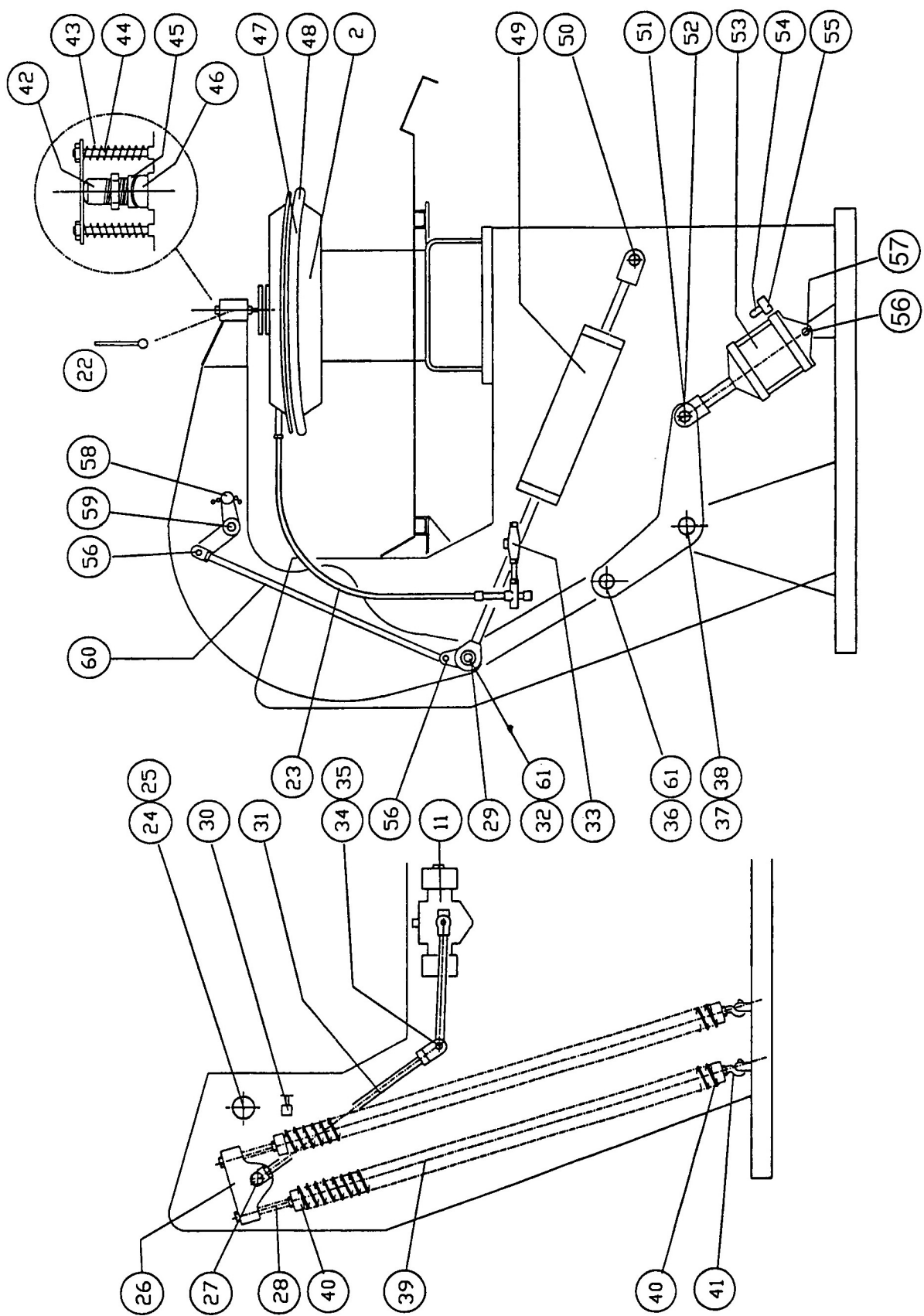
(B)

PA 1401: 67 68

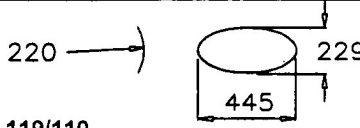
PA ....-116:  
13-14-74-75-76







# Laundry Press

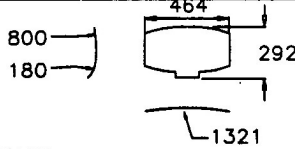


220 →

229

445

**119/110**  
 Press Shoe Group: 121741  
 Head: 114256  
 Buck: 102045  
 Covering: 116909



800 →

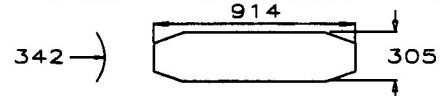
180 →

464

292

1321

**120/110**  
 Press Shoe Group: 121743  
 Head: 114521  
 Buck: 114520  
 Covering: 116910

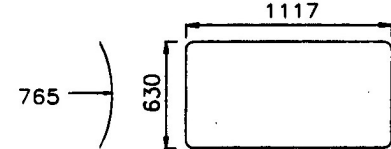


342 →

914

305

**136/110**  
 Press Shoe Group: 121827  
 Head: 114758  
 Buck: 114759  
 Covering: 116915

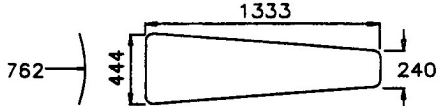


765 →

630

1117

**144/110**  
 Press Shoe Group: 121796  
 Head: 114494  
 Buck: 114495  
 Covering: 116916



762 →

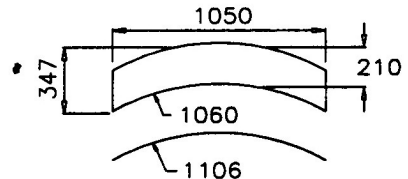
444

1333

240

**153/110**  
 Press Shoe Group: 121790  
 Head: 114487  
 Buck: 114486  
 Covering: 116917

**153/116**  
 Press Shoe Group: 121870  
 Head: 102333  
 Buck: 102064  
 Covering: 116969



1050

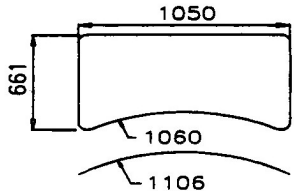
347

210

1060

1106

**239/110**  
 Press Shoe Group: 121799  
 Head: 114509  
 Buck: 114508  
 Covering: 116918



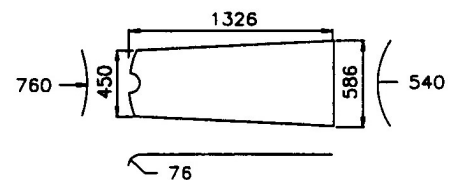
1050

661

1060

1106

**240/110**  
 Press Shoe Group: 121801  
 Head: 114511  
 Buck: 114510  
 Buck covering: 116919



1326

760 →

450

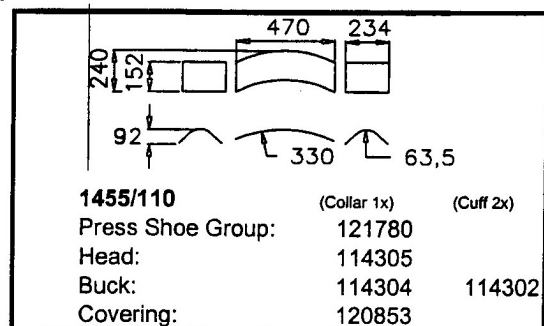
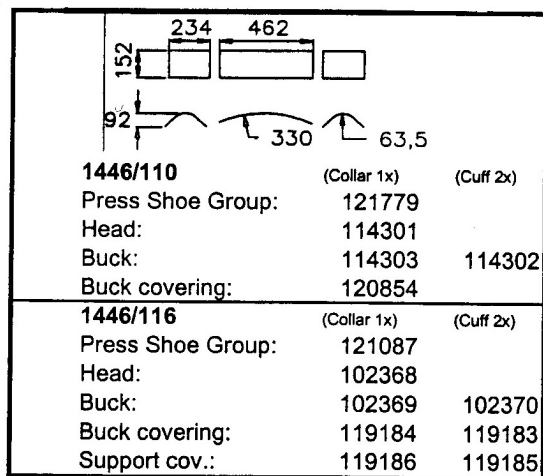
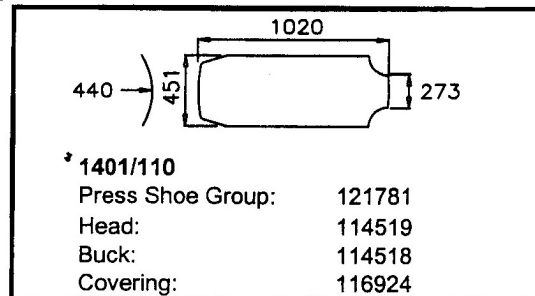
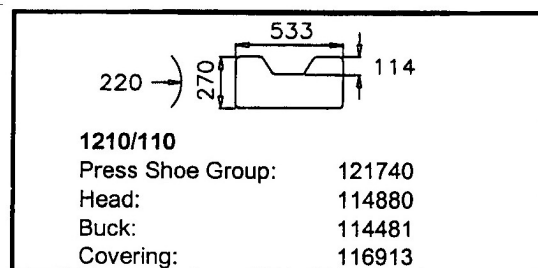
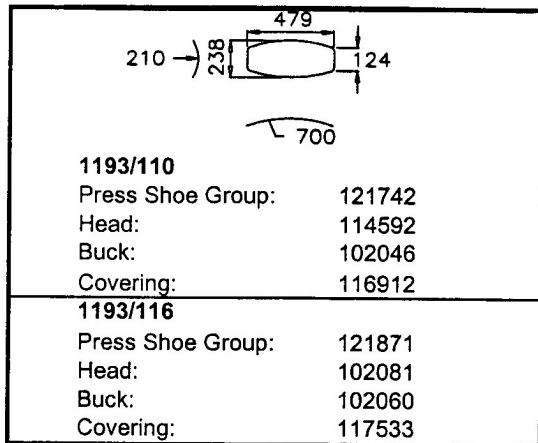
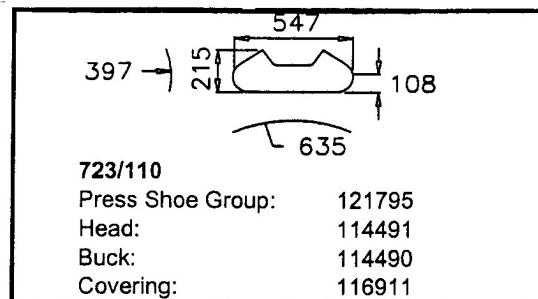
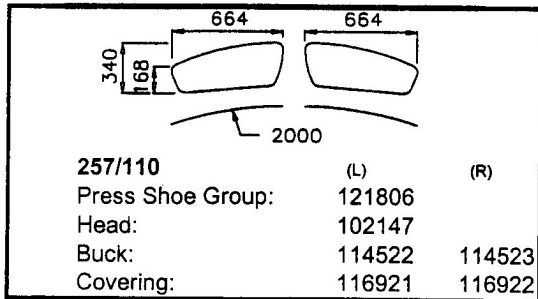
586

540

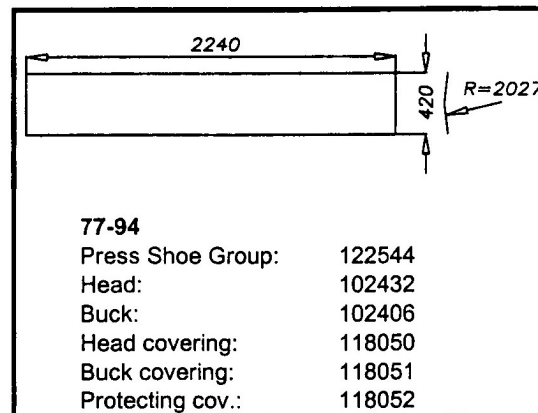
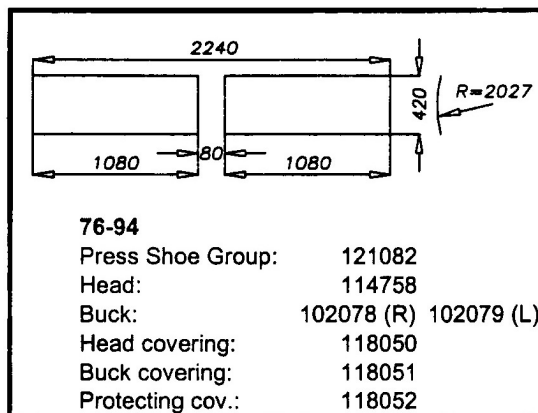
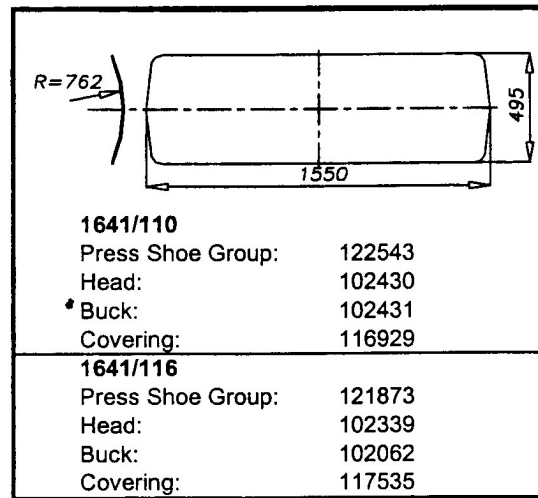
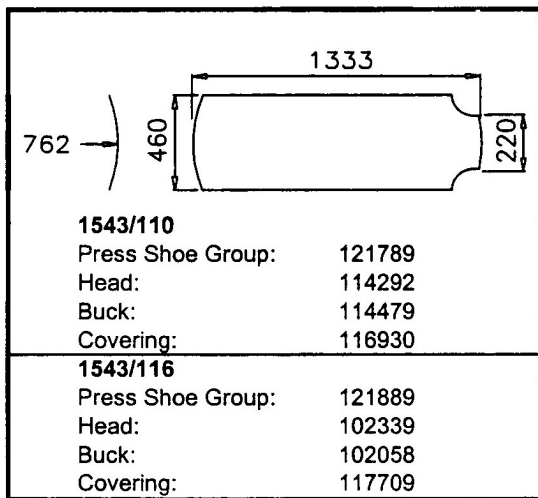
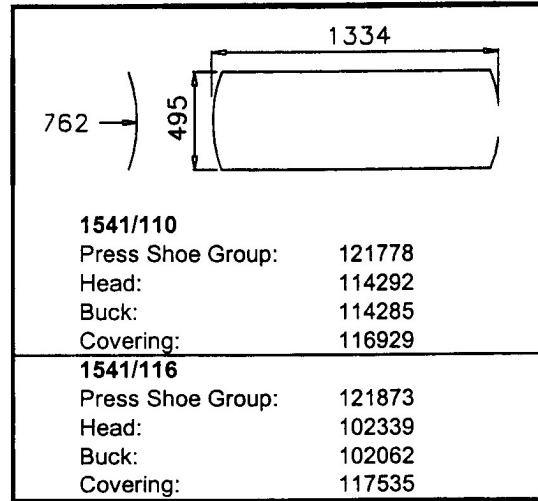
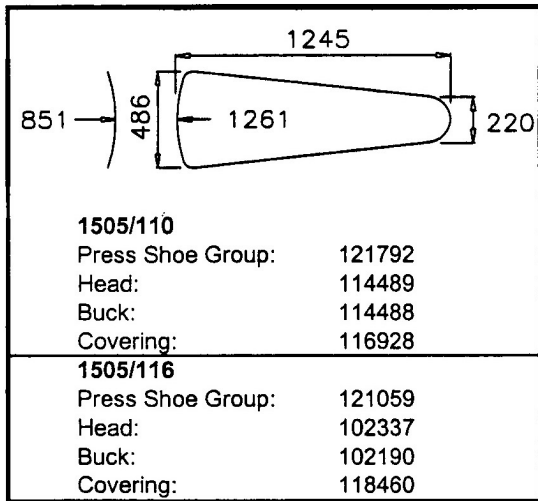
76

**254/110**  
 Press Shoe Group: 121798  
 Head: 114506  
 Buck: 114507  
 Covering: 116920

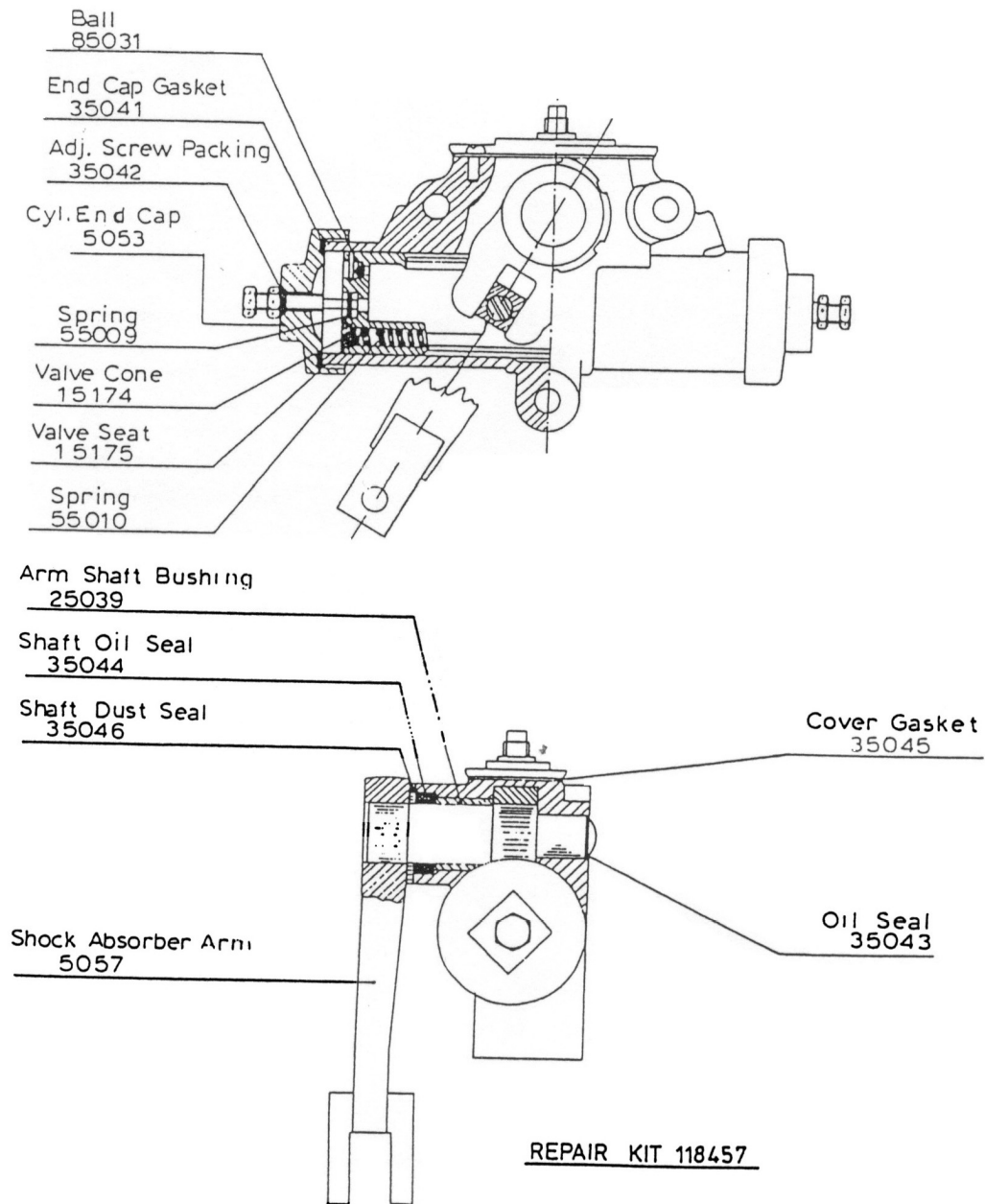
# Laundry Press



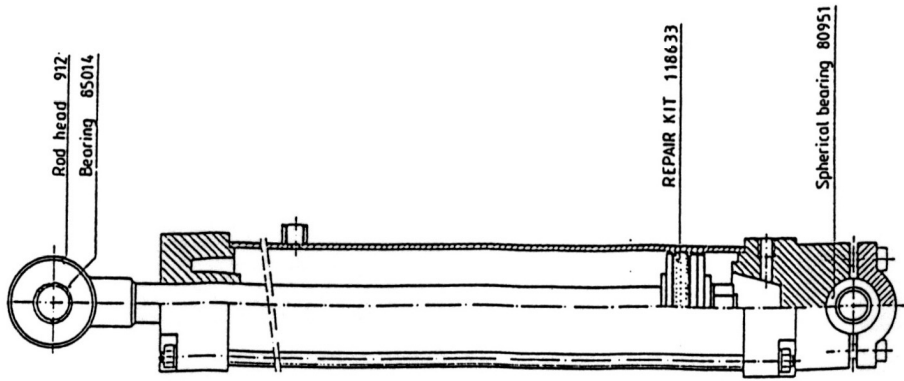
# Laundry Press



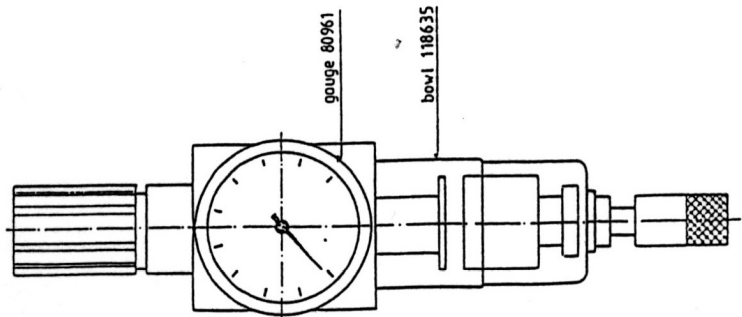
11



49

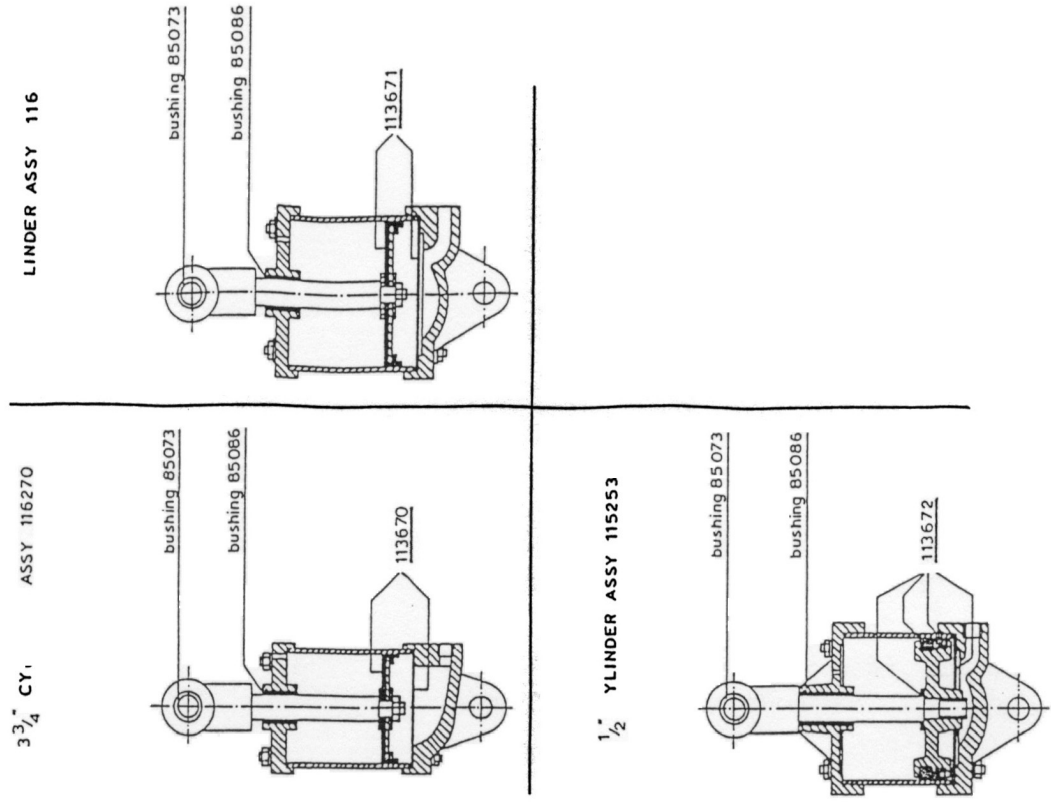


10



REPAIR KIT 118634

53



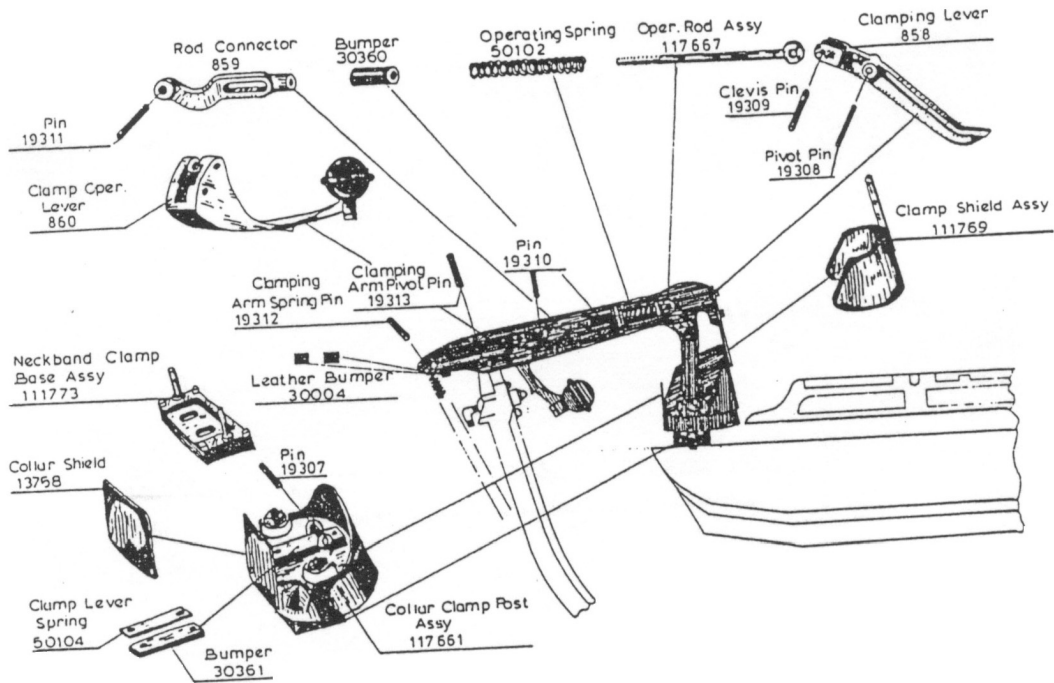


(E)

PA 1401-110/116 only

## COLLAR CLAMP ASSY

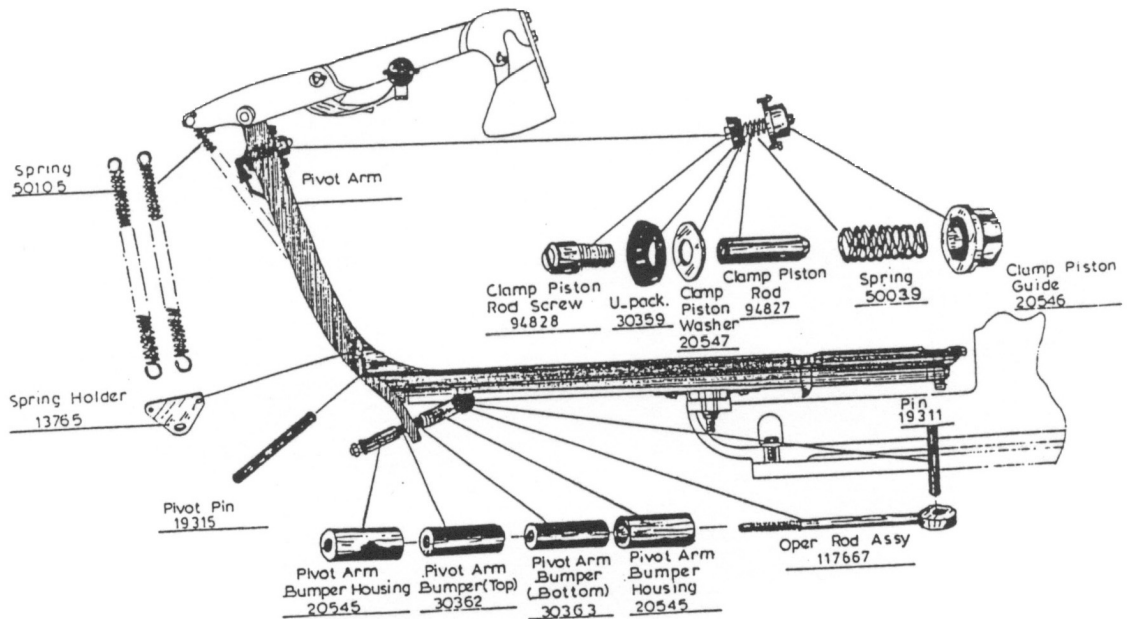
117660



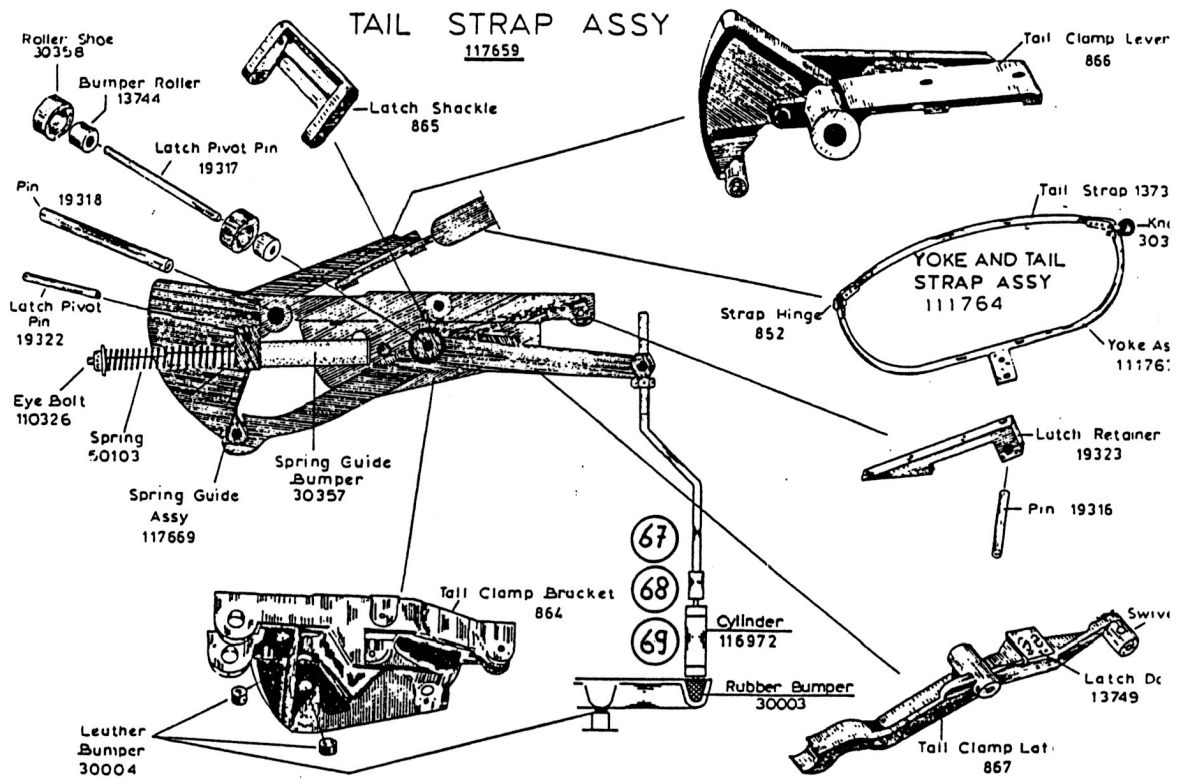
573 b

## COLLAR CLAMP ASSY

117660

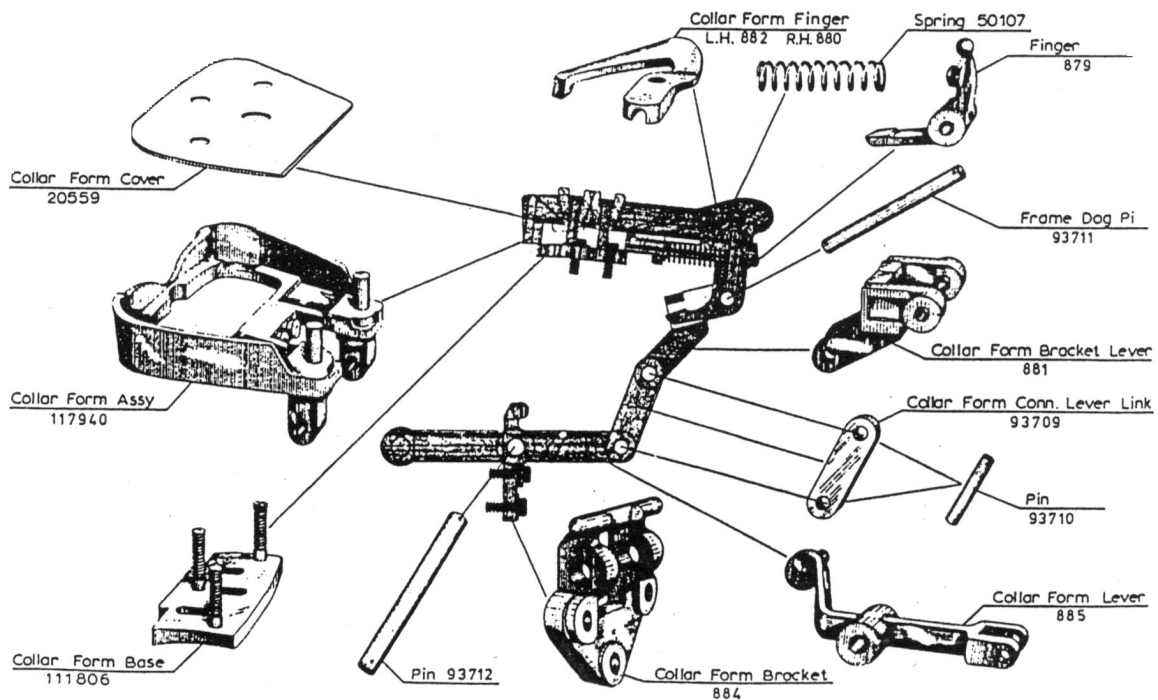


PA 1401-110/116 only




763 b

## COMPLETE COLLAR FORM



# Safety Bar

Not recommended for the laundry-presses. As per CE regulations, safety is build into the design of these machines by a safety relay to operate push buttons by two hands within ½ sec. in combination with the good survey over the buck and head.

-  Before assembling the safety bar, close the steam shut off valves (types ...-110), release the steam pressure by opening the release cock, remove the compressed air from the air control and turn 'OFF' the main switch.

See addition A:

- Disassemble head assy from head lever.
- Assemble connecting plate assy on the head assy.
- Re-assemble head assy on the head lever.
- Assemble braces with micro switches on the connecting plate assy.
- Assemble safety bar assy on the braces.

See addition B:

- Assemble relay (100) and reset switch (101) in the control box.
- Connect relay (100), reset switch (101) and micro switches (102) according the wiring diagram (see addition B).

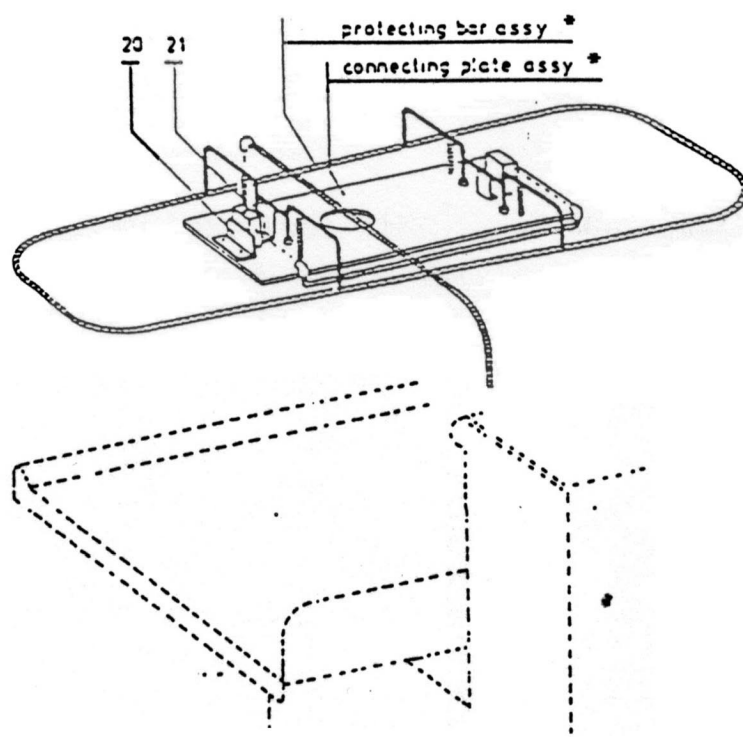
Notice:

- When the machine is connected to the main power supply, the machine must be put into operation with the reset switch (101).
- When during closing this safety device is touched, the complete machine will become tensionless. The reset switch (101) will switch the machine on again.

Spare parts:

No.	Discription	Art. no.
100	Relay	70458
	Relay base	70459
101	Reset switch	70480
102	Micro switch	70537

A



\*

S.V.P. bij bestelling modelnummer van de machine opgeven

Please state modelnumber of press when ordering

Bei bestellung bitte modelnummer der machine angeben

Lors d'une commande de pièces de rechange veuillez spécifier le modèle de la machine

## **WARRANTY**

The Cissell Manufacturing Company (Cissell) warrants all new equipment (and the original parts thereof) to be free from defects in material or workmanship for a period of one (1) year from the date of sale thereof to an original purchaser for use, except as hereinafter provided. With respect to non-durable parts normally requiring replacement in less than one (1) year due to normal wear and tear, including, but not limited to, cloth goods, valve discs, hoses, and iron cords, and with respect to all new repair or replacement parts for Cissell equipment for which the one (1) year warranty period has expired, or for all new repair or replacement parts for equipment other than Cissell equipment, the warranty period is limited to ninety (90) days from date of sale. The warranty period on each new replacement part furnished by Cissell in fulfillment of the warranty on new equipment or parts shall be for the unexpired portion of the original warranty period on the part replaced.

With respect to electric motors, coin meters and other accessories furnished with the new equipment, but not manufactured by Cissell, the warranty is limited to that provided by the respective manufacturer.

Cissell's total liability arising out of the manufacture and sale of new equipment and parts, whether under the warranty or caused by Cissell's negligence or otherwise, shall be limited to Cissell repairing or replacing, at its option, any defective equipment or part returned f.o.b. Cissell's factory, transportation prepaid, within the applicable warranty period and found by Cissell to have been defective, and in no event shall Cissell be liable for damages of any kind, whether for any injury to persons or property or for any special or consequential damages. The liability of Cissell does not include furnishing (or paying for) any labor such as that required to service, remove or install; to diagnose troubles; to adjust, remove or replace defective equipment or a part; nor does it include any responsibility for transportation expense which is involved therein.

The warranty of Cissell is contingent upon installation and use of its equipment under normal operating conditions. The warranty is void on equipment or parts; that have been subjected to misuse, accident, or negligent damage; operated under loads, pressures, speeds, electrical connections, plumbing, or conditions other than those specified by Cissell; operated or repaired with other than genuine Cissell replacement parts; damaged by fire, flood, vandalism, or such other causes beyond the control of Cissell; altered or repaired in any way that effects the reliability or detracts from its performance, or; which have had the identification plate, or serial number, altered, defaced, or removed.

No defective equipment or part may be returned to Cissell for repair or replacement without prior written authorization from Cissell. Charges for unauthorized repairs will not be accepted or paid by Cissell.

CISSELL MAKES NO OTHER EXPRESS OR IMPLIED WARRANTY, STATUTORY OR OTHERWISE, CONCERNING THE EQUIPMENT OR PARTS INCLUDING, WITHOUT LIMITATION, A WARRANTY OF FITNESS FOR A PARTICULAR PURPOSE, OR A WARRANTY OF MERCHANTABILITY. THE WARRANTIES GIVEN ABOVE ARE EXPRESSLY IN LIEU OF ALL OTHER WARRANTIES, EXPRESS OR IMPLIED. CISSELL NEITHER ASSUMES, NOR AUTHORIZES ANY PERSON TO ASSUME FOR IT, ANY OTHER WARRANTY OR LIABILITY IN CONNECTION WITH THE MANUFACTURE, USE OR SALE OF ITS EQUIPMENT OR PARTS.

For warranty service, contact the Distributor from whom the Cissell equipment or part was purchased. If the Distributor cannot be reached, contact Cissell.